

LOCAL CO² RIDE KIT™

Riding Essentials

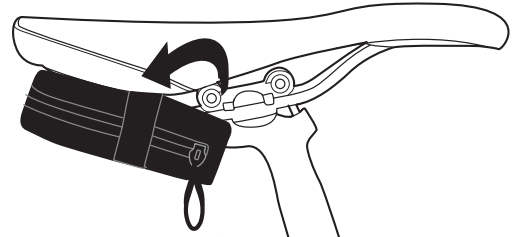
Part #7102600

GRID MTB SEAT BAG

Installation: Lace Velcro strap through seat rails. Insert strap through 'D' ring. Cinch the bag up as high as it will go. Do not over-tighten.

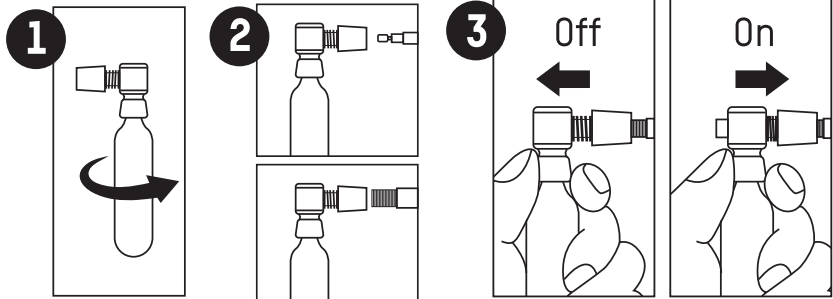
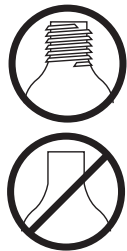
- Do not over stuff the bag.
- Do not leave valuables unattended.

⚠ WARNING: Always make sure that the bag does not interfere with controls.



WAYSIDE CO₂ INFLATOR WITH CARTRIDGE

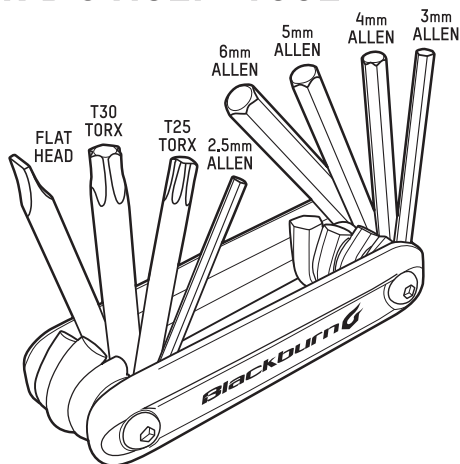
16g CO₂ Cartridge



⚠ CAUTION: Contents under pressure. Store away from heat. Do not burn. Container may explode if heated above 120° F/49° C. Do not puncture. Do not inhale CO₂. Never attempt to refill a disposable cartridge. Keep out of reach of children.

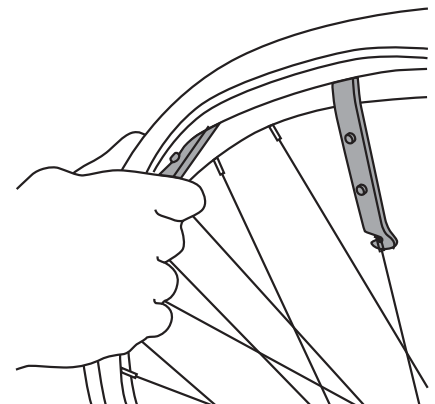
⚠ WARNING: Any CO₂ cartridge must be completely empty before removal from inflator. An activated cartridge removed from an inflator is dangerous. Do not over-inflate tire as injury can result. Presta valve must be open prior to using the inflator. Always hold cartridges by insulated protection, never put fingers on metallic areas. Keep out of reach of children. Do not discharge towards body.

GRID 8 MULTI-TOOL



TIRE LEVERS

Removing the tire: Insert the flat part of the lever between the tire sidewall and wheel rim. Pull down on the lever to pry up the sidewall and attach the hooked end of the lever to a wheel spoke. Slip the second lever into the space you just pried up next to the first lever. Pull down on the lever to push up the tire sidewall. Grip the wheel firmly and slide the second lever along the wheel rim.



⚠ WARNING: Tire levers are recommended when removing bike tires and tubes to avoid damage. Do not use a sharp tool. Do not over inflate tires. See tire sidewall for proper PSI.

Blackburn

Customer Service: 1-800-456-2355
Blackburndesign.com

**LIFETIME
WARRANTY**