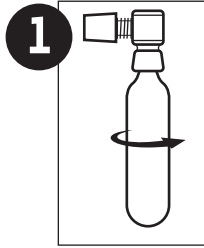


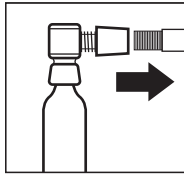
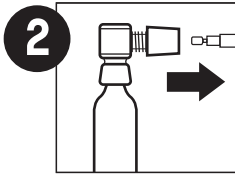
WAYSIDE CO2™

Thread-On Inflator

Part# 7063322



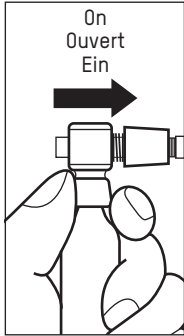
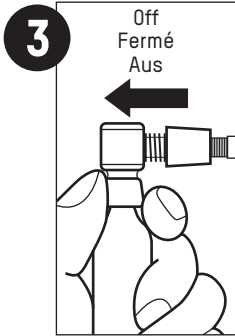
⚠ WARNING: CO2 cartridge must be completely empty before removal from inflator. An activated cartridge removed from an inflator is dangerous! Do not over-inflate tire as injury can result. Presta Valve must be open prior to using the inflator. Always hold cartridges by insulated protection. Do not discharge toward face or body. Never put fingers on metallic areas. Keep out of reach of children.



16g CO2 Cartridge



⚠ CAUTION: Contents under pressure. Store away from heat. Do not burn. Container may explode if heated above 120° F/49° C. Do not puncture. Do not inhale CO2. Never attempt to refill a disposable cartridge. Keep out of reach of children.



Visit us at blackburndesign.com for product updates.



5550 Scotts Valley Drive, Scotts Valley, Ca 95066
Customer Service: 1-800-456-2355
Blackburndesign.com
Printed in Taiwan

**LIFETIME
WARRANTY**